

High-speed door vs. sectional door

Superior in every respect: EFA-SST® Essential



EFAFLEX 
safe high-speed doors

Superior in performance, speed, and service life

With our economical EFA-SST® Essential high-speed spiral door, you can make the switch from conventional sectional doors to the price-performance winner from EFAFLEX.

ENERGY EFFICIENCY THAT PAYS OFF

The EFA-SST® Essential is the most economical solution for every building closure: Thanks to its outstanding insulation properties, it ensures constant temperatures inside the building. Together with the speed at which the door is opened and closed, the energy loss is kept at the lowest level. This protects your building from unwanted heat or cold air exchange and therefore reduces heating and cooling costs to a minimum!

DURABLE AND HEAVY-DUTY

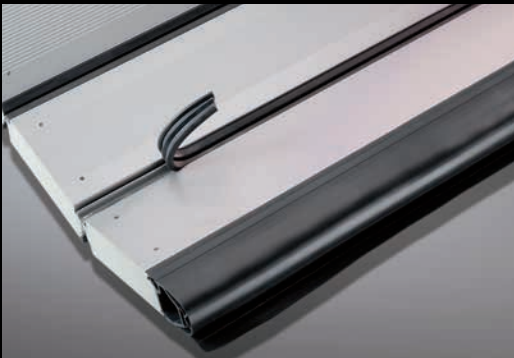
Even in continuous use, the EFA-SST® Essential meets the highest expectations: Its innovative design makes the high-speed spiral door extremely stable, low-maintenance and weatherproof. It also withstands strong wind loads and can complete up to 100,000 load cycles every year – thanks to the efficient EFA-THERM® laths in all weather conditions, ranging from freezing cold to summer heat. EFAFLEX high-speed spiral doors are virtually indestructible and convince by their long service life – you can rely on them!

RELIABLE, FAST, AND COMPACT

Thanks to the compact design of the EFAFLEX spiral, the EFA-SST® Essential can be integrated into almost any building structure. The homogeneous door construction ensures a very good running performance combined with sufficiently high speed. In addition, the surfaces remain free of wear and scratches due to the contactless winding of the door leaf – it goes without saying that this also applies to the optionally installed sight laths.

Best in performance, speed, and service life! This means that the door meets the consistently high quality standards of EFAFLEX – at a particularly attractive purchase price.

**AN INVESTMENT FROM WHICH YOU WILL
DEFINITELY BENEFIT!**



Advantages in direct comparison

EFA-SST® ESSENTIAL



Maximum opening and closing speeds up to 0.5 m/s

Spiral door technology for space-saving installation and contactless curtain winding

All-round safety due to closed case design

Integrated safety light barrier protects against external manipulation

Cable routing in the door cases for optimum protection

Can be used sustainably thanks to a service life of up to 1 million cycles

High-quality, continuous hinge chain of metal

Self-supporting case construction for easy assembly

Optional spiral cover and motor cover

Can be used variably thanks to optional outdoor installation

Conventional sectional door



Speed up to 0.25 m/s

Increased space requirement and wear due to door movement with deflexion technology

Exposed door technology (cables and rollers) through open guide rail

Exposed light barrier allows external access

Spiral or energy chain are unprotected

Life expectancy only 0.1 million cycles

Individual hinges of plastic

Case assembly only possible with substructure

No protective covers

No outdoor installation

SPEED

Door leaf speed

Space requirement & wear

SAFETY

Design

Light barrier

Power supply to contact strip

QUALITY

Service life

Hinges

Case assembly

Protection by covering

Outdoor installation

EFAFLEX

Tor- und Sicherheitssysteme

GmbH & Co. KG

Fliederstraße 14

84079 Bruckberg / Germany

Telephone +49 8765 82-0

www.efaflex.com

info@efaflex.com

EFAFLEX® is a registered and legally
protected trademark.

Subject to technical changes. Some
diagrams depict special features.

Overall design:

www.creativconcept.de 04 | 2025

EFAFLEX 
safe high-speed doors