

Detail D:
fixing points for sealing profile
2 points at H+100 on B/3

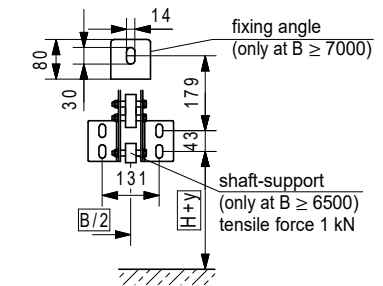
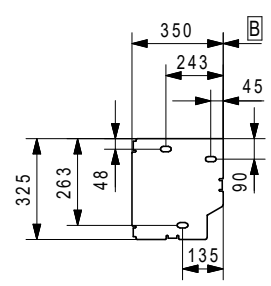
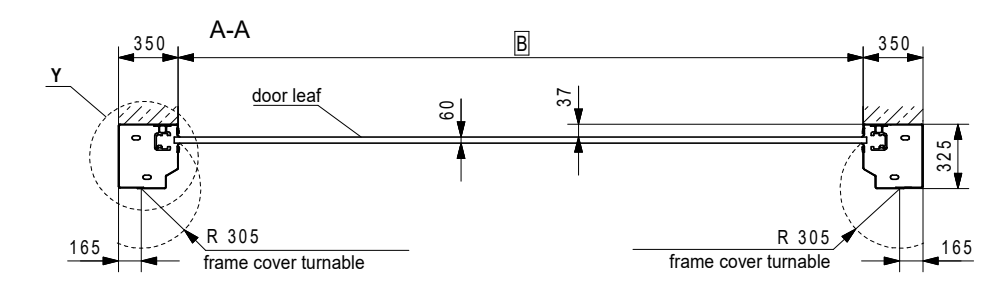
Detail W:
water drain recommendation
floor level according to DIN EN 12489

Detail X:
fixing points for frame 2 points each group of holes
fixing hole 16 x 30

Detail Y:
fixing points for ground plate
3 points fixing hole 15 x 30

Detail Z:
fixing points for shaft support
4 points fixing hole 14 x 28

fixing point frame Ø13



Height in cm	Door width in cm
120	120 200 300 400 500 600 700 800
200	
300	
400	
500	
600	
700	
780	

Unless otherwise stated, all dimensions are in mm.

Dim.	mm	Remarks
e	939	H ≤ 4900
	1025	4900 < H ≤ 6200
	1089	6200 < H ≤ 7800
f	950	H ≤ 4900
	1030	4900 < H ≤ 6200
	1140	6200 < H ≤ 7800
n	788	H < 2000
	1455	H ≥ 2000
x	347	H ≤ 4900
	390	4900 < H ≤ 6200
	424	6200 < H ≤ 7800
y	767	H ≤ 4900
	853	4900 < H ≤ 6200
	917	6200 < H ≤ 7800
K	100	installation clearance top
	150	installation clearance top with spiral cover top
Q	ca. 80	installation clearance
QM	ca. 250	installation clearance
R	min. 405	installation clearance
B		clear width
H		clear height

Weitergabe, Vervielfältigung sowie Verwertung des Inhaltes dieser Zeichnung sind verboten, soweit nichts ausdrücklich vereinbart. Diese Zeichnung ist urheberrechtlich geschützt. ISO 16016

The reproduction, distribution and utilization of this drawing as well as the communication of its contents to third parties without explicit authorisation is prohibited. This drawing is protected by copyright. ISO 16016

Le dessin reste notre propriété. Il n'est pas permis de le multiplier sans notre consentement, ni de soumettre aux autres personnes ni d'abandonner à la concurrence pour quelques intentions. Ce dessin est protégé par le droit d'auteur. ISO 16016

Date	Name
23.06.2025	Breznikar
Appr.	

EFAFLEX
schnelle und sichere Tore

EFAFLEX Tor- und Sicherheitssysteme GmbH & Co.KG
Fliederstraße 14
D-84079 Bruckberg

HIGH-SPEED TURBO DOOR
"ÜS" - version
round spiral

Type: **EFA-STT®-ÜS**

Drawing No.: **247 A16**

Repl. for: 247 A15