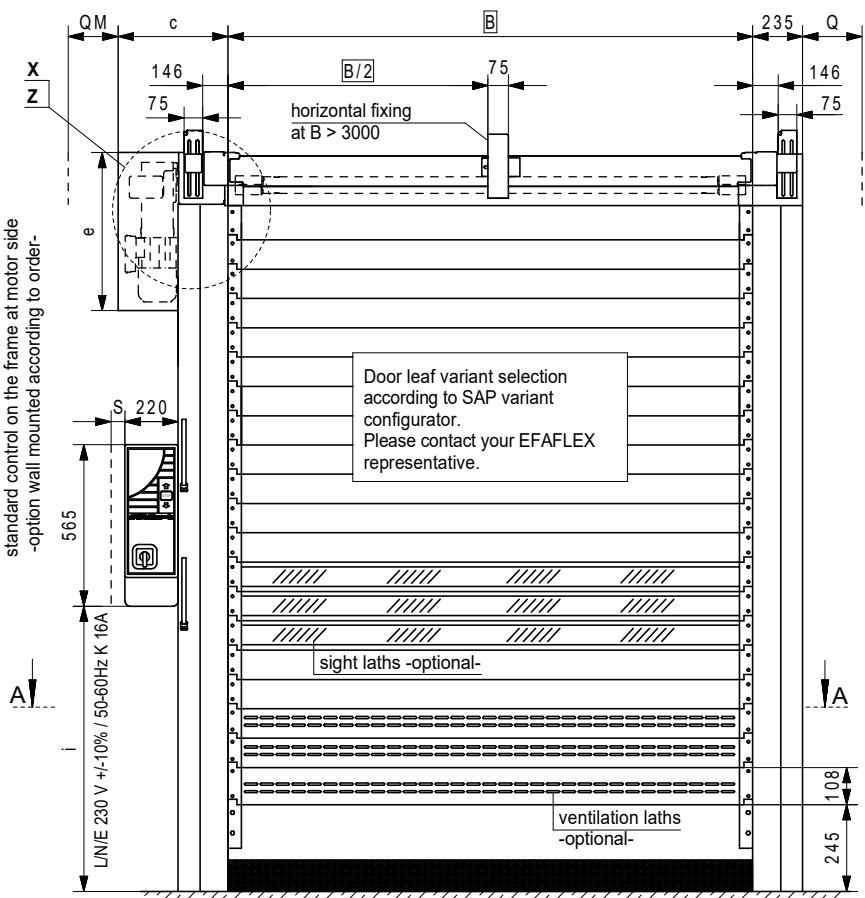
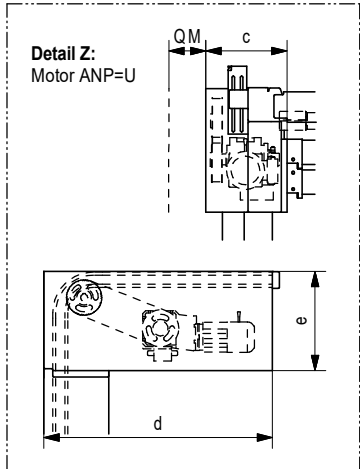
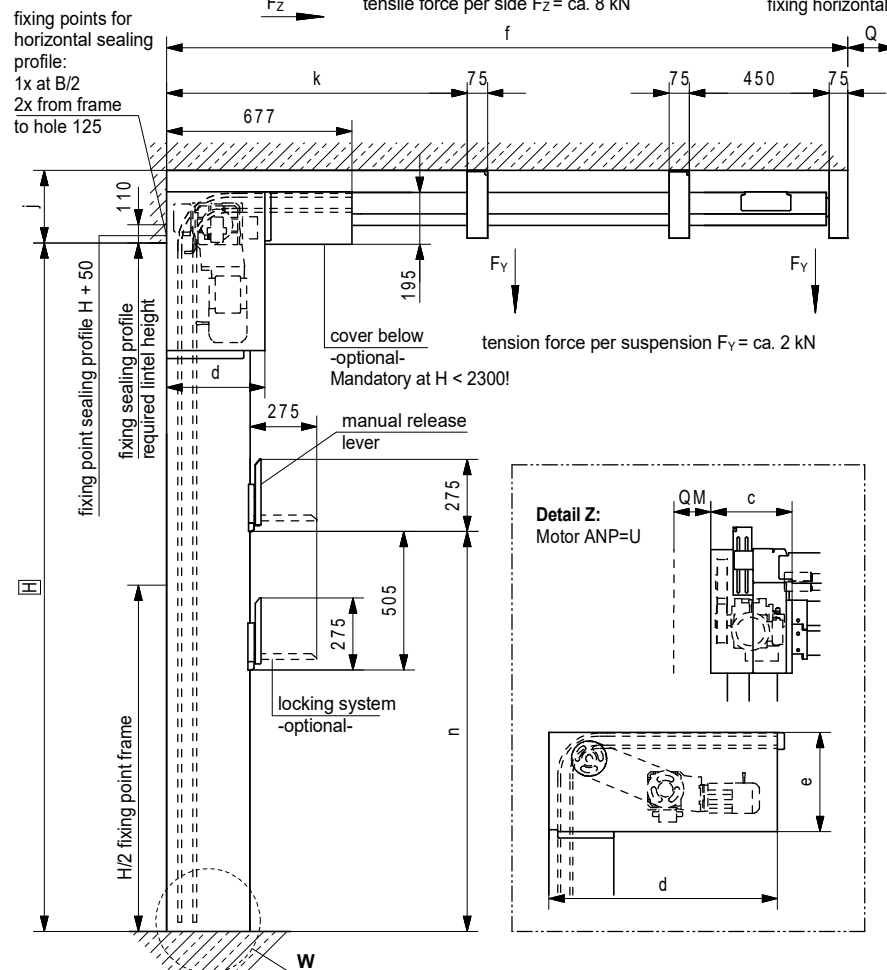


Detail Z: Motor ANP=S



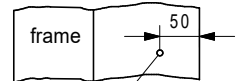
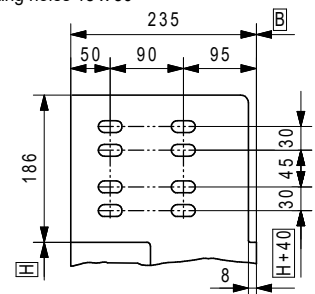
standard control on the frame at motor side  
-option wall mounted according to order-



Dim.	ANP mm	U	Remarks
c	453	294	
d	360	1045	motor cover width
e	580	455	motor cover height
f	H + 710		max. length at H ≥ 2400
	H + 1210		max. length at H < 2400
i	1230		H ≥ 2200
	H - 970		H < 2200
j	200		min. lintel height
	660		max. lintel height
k	1900		only at H > 2500
n	1480		H ≥ 2200
	H - 745		H < 2200
Q	80		installation clearance
QM	150	80	installation clearance
S	ca. 25		installation clearance
B			clear width
H			clear height

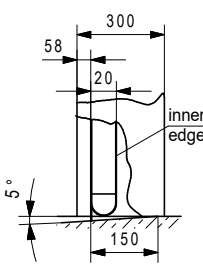
Unless otherwise stated, all dimensions are in mm.

**Detail X:**  
fixing points for frame  
2 points per each group of holes  
fixing holes 15 x 30

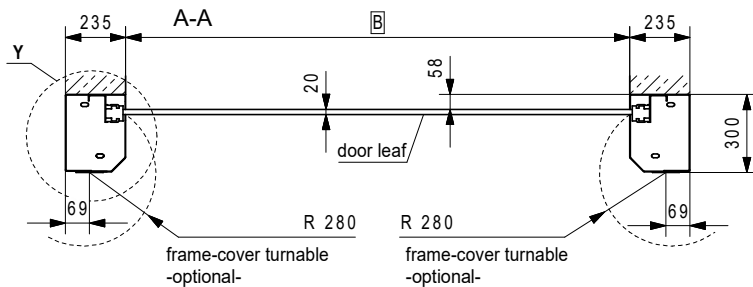
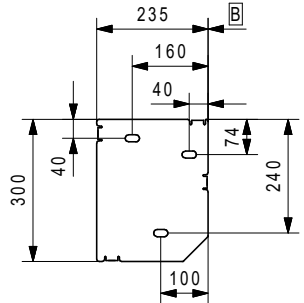


fixing point frame Ø 12 at H/2

**Detail W:**  
water drain recommendation  
floor level according to  
DIN EN 12489



**Detail Y:**  
fixing point for ground plate  
3 points fixing hole 15 x 30



Height in cm	Door width in cm							
	80	150	200	250	300	350	400	
100								
150								
200								
250								
300								
350								
400								

Weitergabe, Vervielfältigung sowie Verwertung des Inhaltes dieser Zeichnung sind verboten, soweit nichts ausdrücklich vereinbart. Diese Zeichnung ist urheberrechtlich geschützt. ISO 16016

The reproduction, distribution and utilization of this drawing as well as the communication of its contents to third parties without explicit authorisation is prohibited. This drawing is protected by copyright. ISO 16016

Le dessin reste notre propriété. Il n'est pas permis de le multiplier sans notre consentement, ni de soumettre aux autres personnes ni d'abandonner à la concurrence pour quelques intentions. Ce dessin est protégé par le droit d'auteur. ISO 16016

	Date	Name
Drawn	27.08.2024	Breznikar
Appr.		

**EFAFLEX**  
schnelle und sichere Tore  
EFAFLEX Tor- und Sicherheitssysteme GmbH & Co.KG  
Fliederstraße 14  
D-84079 Bruckberg

HIGH-SPEED SPIRAL DOOR  
low lintel  
for parking and garage systems

Type:	EFA-SST® PS-N
Drawing No.:	281 N02
Repl. for:	281 N01