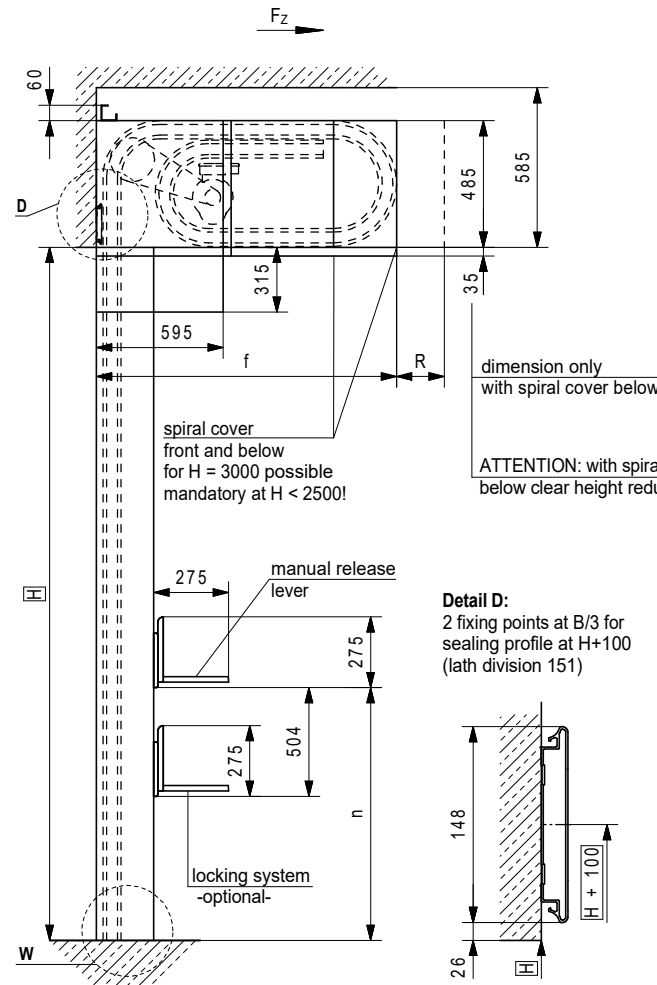
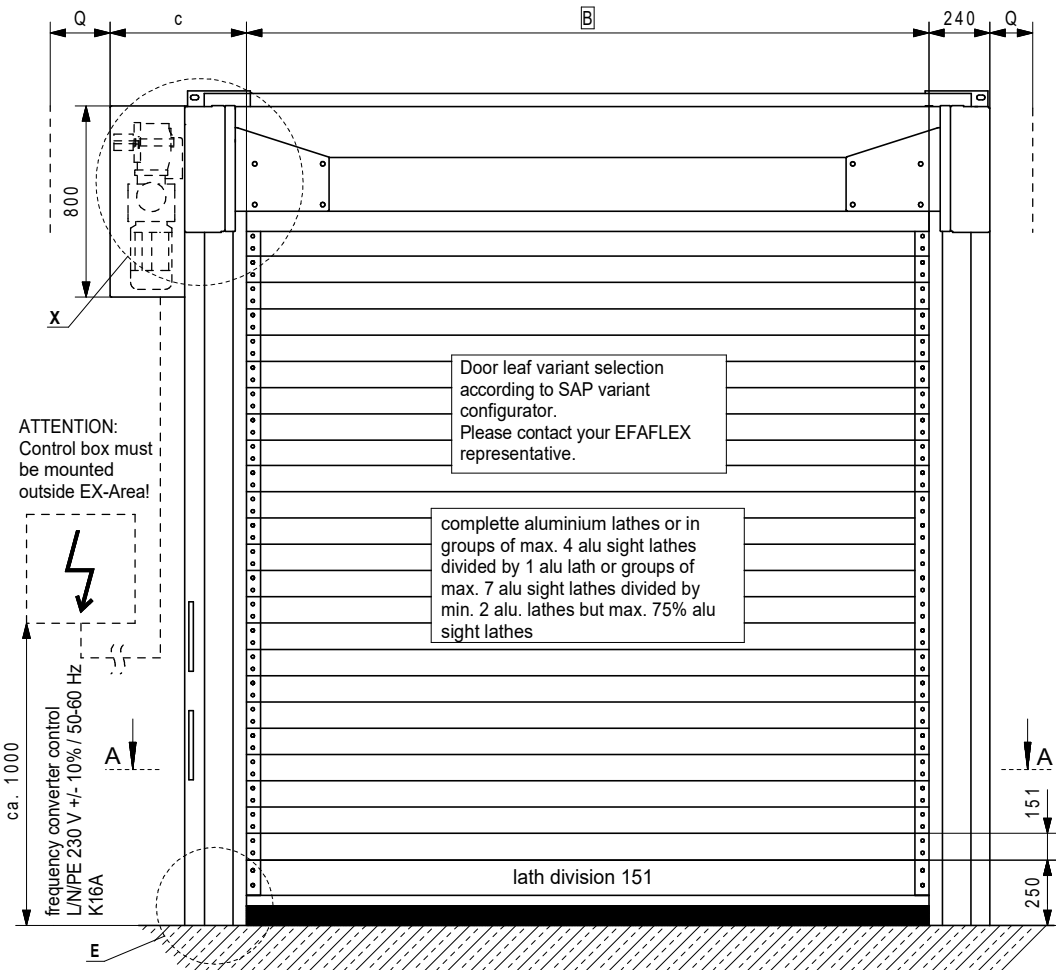


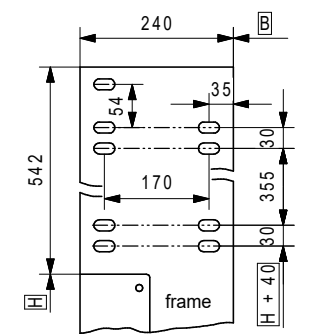
tensile force per side  $F_z = \text{ca. } 8 \text{ kN}$



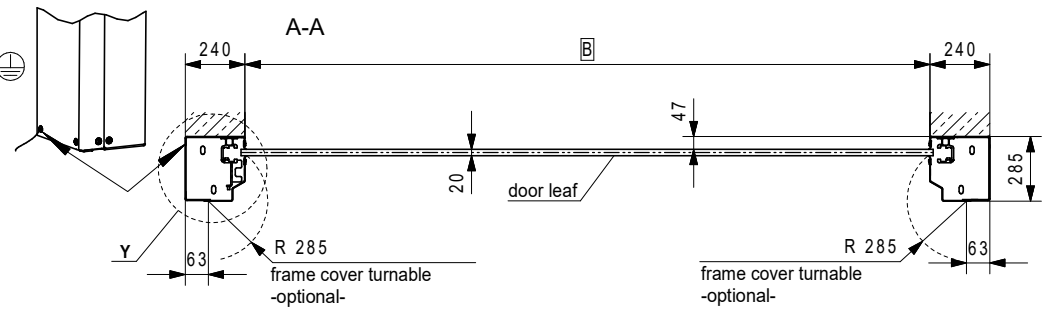
Dim.	mm	Remarks
c	590	motor left side
	630	motor right side
f	1135	$H \leq 3000$
	1435	$3000 < H \leq 4000$
	1785	$4000 < H \leq 5000$
n	H - 545	$H < 2000$
	1455	$H \geq 2000$
Q	ca. 100	installation clearance
R	min. 300	installation clearance
B		clear width
H		clear height

Unless otherwise stated, all dimensions are in mm.

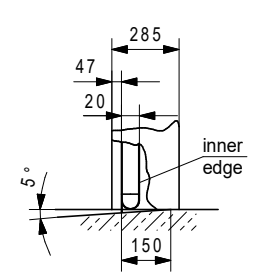
**Detail X:**  
fixing points for frame  
2 points each group of holes fixing hole 16 x 30



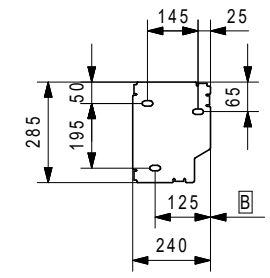
**Detail E:**  
port side grounding



**Detail W:**  
water drain recommendation  
floor level according to DIN EN 12489



**Detail Y:**  
fixing points for ground plate  
3 points fixing hole 15 x 30



Height in cm	Door width in cm							
	120	150	200	250	300	350	400	400
120								
200								
250								
300								
350								
400								
450								
500								

Weitergabe, Vervielfältigung sowie Verwertung des Inhaltes dieser Zeichnung sind verboten, soweit nichts ausdrücklich vereinbart. Diese Zeichnung ist urheberrechtlich geschützt.  
ISO 16016

The reproduction, distribution and utilization of this drawing as well as the communication of its contents to third parties without explicit authorisation is prohibited.  
This drawing is protected by copyright.  
ISO 16016

Le dessin reste notre propriété. Il n'est pas permis de le multiplier sans notre consentement, ni de soumettre aux autres personnes ni d'abandonner à la concurrence pour quelques intentions. Ce dessin est protégé par le droit d'auteur.  
ISO 16016

	Date	Name
Drawn	01.10.2022	Makarovic
Appr.		

**EFAFLEX**  
schnelle und sichere Tore

EFAFLEX Tor- und Sicherheitssysteme GmbH & Co.KG  
Fliederstraße 14  
D-84079 Bruckberg

**HIGH-SPEED SPIRAL DOOR**  
"L" - version  
oval spiral  
II 2G Ex IIB T4 Gb (EX-Zone 1)

Type: **EFA-SST®-L EX**  
Drawing No.: **284 EX1 A06**  
Repl. for: 284 EX1 A05