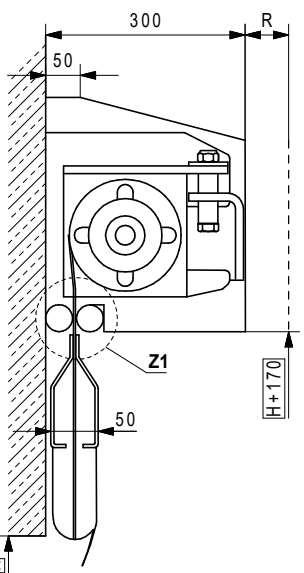
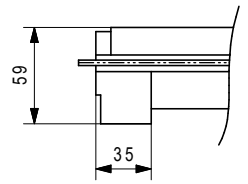


Detail Z:
15° bevel
optional: 45° bevel, up to ceiling



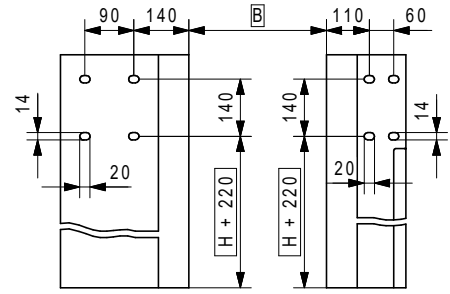
Detail Z2:
Bigger slider:
Only with Euchner limit switch!



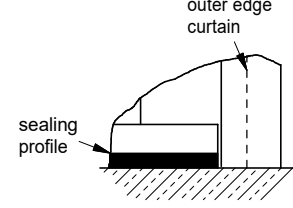
| Dim. | mm | Remarks |
|------|----------|--|
| f | 450 | 15° bevel |
| | 585 | 45° bevel |
| i | H - 300 | 1100 < H ≤ 1900 |
| | ca. 1600 | H > 1900 |
| Q, K | ca. 50 | installation clearance |
| R | min. 400 | installation clearance |
| B | | clear width |
| H | | clear height |
| DUH | | ceiling over H with cover up to ceiling |

Unless otherwise stated, all dimensions in mm.
Frame dimensions are reversed if motor on right side.

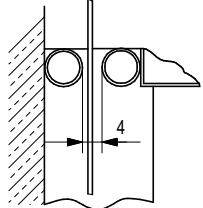
Detail X:
fixing points for frame
2 points each group of holes fixing hole 14 x 20



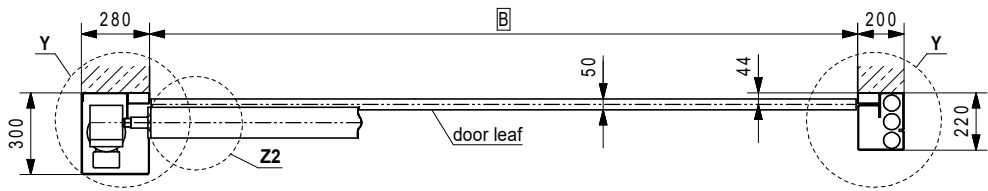
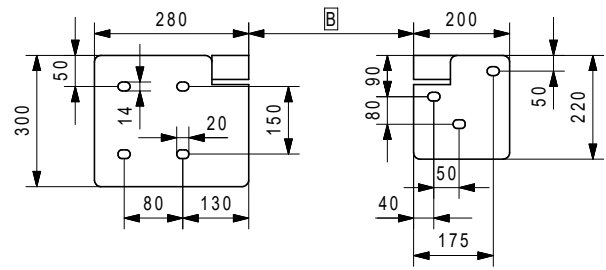
Detail V:



Detail Z1:



Detail Y:
fixing points for ground plate, fixing hole 14 x 20



| Height in cm | Door width in cm | | | | |
|--------------|------------------|-----|-----|-----|-----|
| | 75 | 100 | 150 | 200 | 250 |
| 110 | | | | | |
| 150 | | | | | |
| 200 | | | | | |
| 250 | | | | | |
| 300 | | | | | |

Weitergabe, Vervielfältigung sowie Verwertung des Inhaltes dieser Zeichnung sind verboten, soweit nichts ausdrücklich vereinbart. Diese Zeichnung ist urheberrechtlich geschützt.
ISO 16016

The reproduction, distribution and utilization of this drawing as well as the communication of its contents to third parties without explicit authorisation is prohibited.
This drawing is protected by copyright.
ISO 16016

Le dessin reste notre propriété.
Il n'est pas permis de le multiplier sans notre consentement, ni de soumettre aux autres personnes ni d'abandonner à la concurrence pour quelques intentions. Ce dessin est protégé par le droit d'auteur.
ISO 16016

| | Date | Name |
|-------|------------|-----------|
| Drawn | 01.09.2022 | Makarovic |
| Appr. | | |

EFAFLEX
schnelle und sichere Tore

EFAFLEX Tor- und Sicherheitssysteme GmbH & Co.KG
Fliederstraße 14
D-84079 Bruckberg

HIGH-SPEED ROLL-UP DOOR
"Clean Room" - Premium

Type: **EFA-SRT® CR Premium**
Drawing No.: **254 A18**
Repl. for: 254 A16